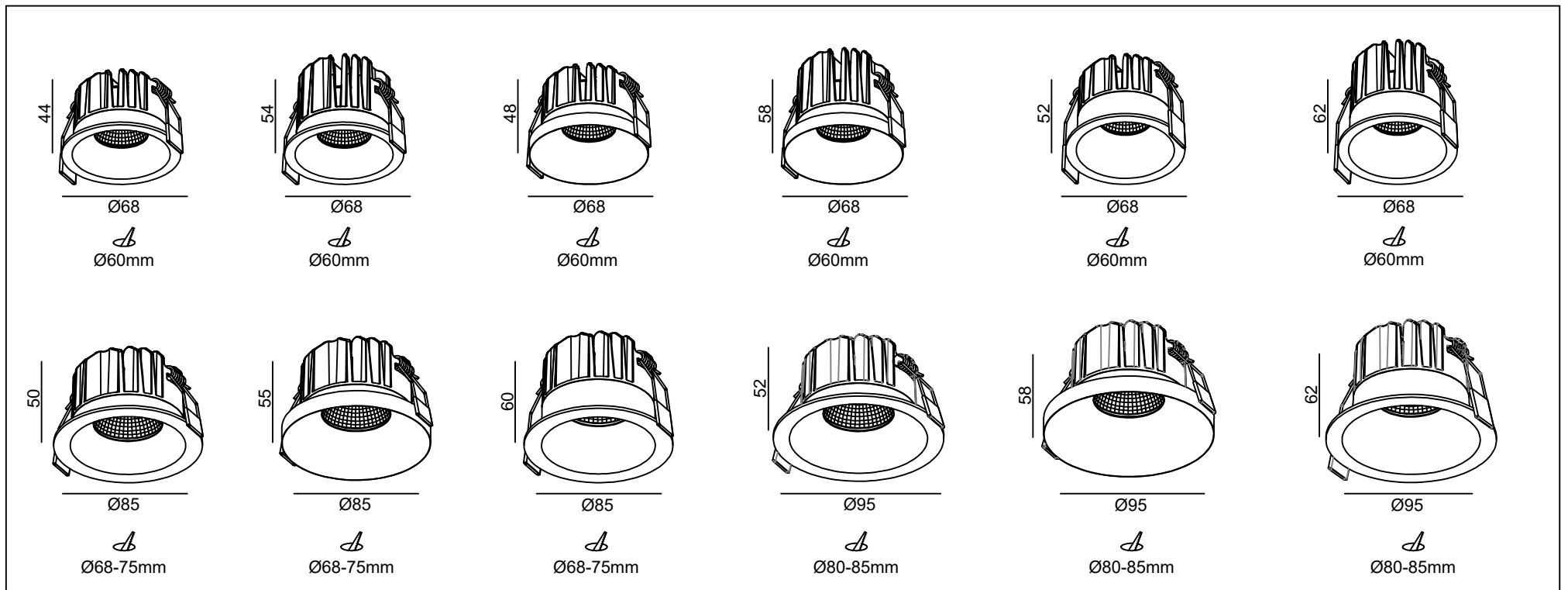
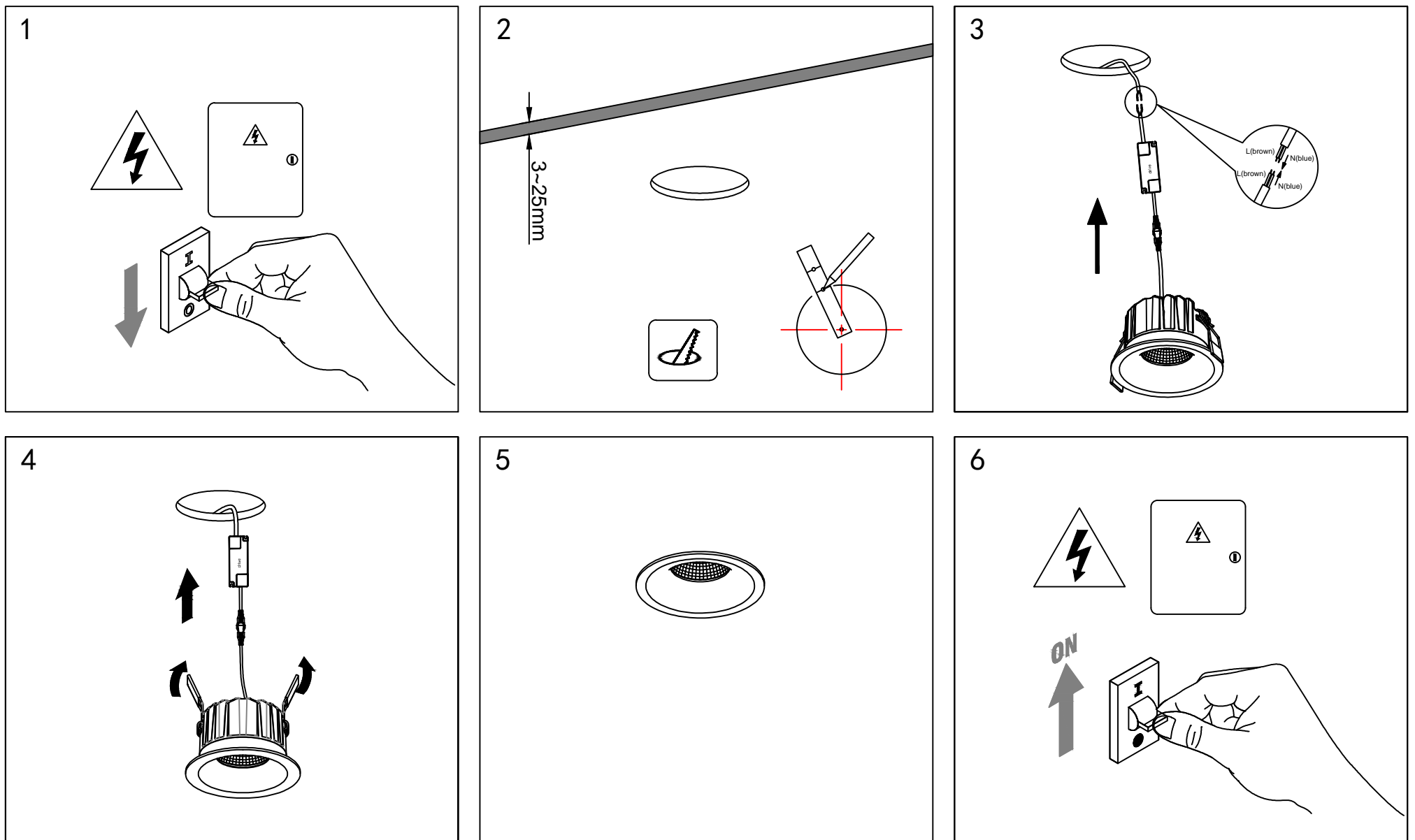


# Installation instructions

## LED embedded spot lights

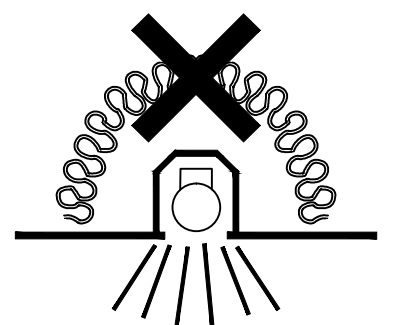


### Installation steps



### Warning, danger of electric shock

1. Installation must be done by professional electrician.
2. Please ensure the power has been cut off before installation, in order to prevent the electric shock, make sure the power supply that can't be resumed by anybody before the job done.
3. Y-type connection; If the external flexible cable or cord of the lamp is damaged, the cord shall be replaced by the manufacturer or its service agent or a person with similar qualification to avoid danger.
4. Non user replacement light source: "the light source in this lamp shall be replaced by the manufacturer or its service agent or a person with similar qualification."
5. It is not allowed to install this lamp on the ceiling that is vulnerable to damage and deformation. The recommended installation thickness shall be subject to the actual model.
6. Warm tip: "do not apply paint and other coatings on the product surface during installation".



IP44 IK02      **CE** **RoHS** 